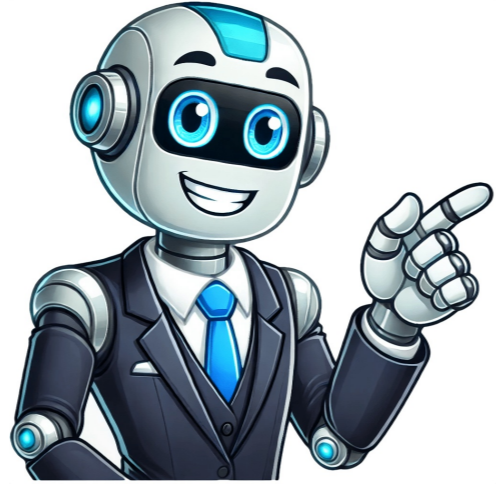


Continue































Cobra CDR 840, CDR 840E, CDR 840C - 1080P FHD DASH CAM Manual This booklet describes the simple steps for mounting, setting up, and using your dash camera. Camera Features Records everything you see and hear in 1080P Full HD with high dynamic range that optimizes video during day or night. Continuous Loop Recording overwrites old footage unless you want to save it. A time/date stamp is embedded on all recordings so you'll never miss an event while driving. Ready to use out-of-the-box. Includes a heavy-duty suction cup to mount the camera to your windshield and an 8GB MicroSD card to record your Ride. Wide angle view gives you a full view of the road without any edge distortion. 3-axis G-Sensor senses sudden accelerations and collisions and automatically protects footage surrounding the incident. Additional Features Emergency Record Button Motion Sensor Built-in Microphone & Speaker Auto-Record and Auto-Power Off Adjustable Movie Clip Time Installation Where to Mount Your Unit You will get optimum performance from your camera if you mount it on the front windshield, behind the rear-view mirror. This will minimize the impact on the driver's line of sight. You'll also want to keep the camera centered and angle the bracket to optimize the camera's view of the road ahead. Windshield Mounting Peel the plastic film off of the suction cup. Unscrew the angle locking knob and remove the mounting screw. Be careful not to lose the metal nut inside the angle locking knob. Slide the mounting bracket onto the GPS receiver and line up the square holes of the bracket with the round holes on the rear of the receiver. Insert the mounting screw and secure it with the angle locking knob. Rotate the suction cup locking knob to tighten or loosen the ball joint. To adjust the angle to the road, if necessary, loosen the angle locking knob. Turn the camera so that it has a clear view of the road ahead. Tighten the knob when done. Press the Suction Cup firmly onto the windshield. Push down on the lever to lock the suction cup in place. Plug the 12V DC power cord into the camera. Plug the cigarette lighter adapter on the power cord into your vehicle's cigarette lighter. Device Operation Powering the Device On and Off To turn the device on, press the POWER button. To turn the device off, press and hold the POWER button for three seconds. Charging the device You can charge the device with the included car charger, or with a USB cable. The device will also run off of its own internal battery for a short time. NOTE: When the Car charger is connected, the device will automatically power on and start recording video. Battery: The battery in this unit is intended to operate the unit after power loss due to an accident or crash. Note that while recording may continue, the device was not intended for long-term recording on battery power. Inserting and removing the Memory Card Your camera comes with an 8GB Memory Card Preinstalled, but it can be upgraded with up to 32GB with a different Memory Card (not included.) To remove the memory card, push the Memory card forward gently and you'll hear a click, and the card slides out. To insert a different memory card, orient the card with the "bumpy edge" facing down and press it until you hear a click, then release. The camera has four separate modes: Video Mode Still Photo Mode Video Playback Mode. While in Playback Mode To toggle between modes: Press the MODE Button: NOTE: You cannot switch modes while the camera is recording video. Video Mode Video Mode is the primary function of this device and allows you to easily record HD video of the road ahead of you. Continuous Cyclical Recording: Once the memory card is full, this camera will continuously overwrite the oldest footage recorded. To protect a clip so that it will not be overwritten, press the FILE LOCK Button. The icon will show on the screen. Files can also be locked from the playback menu in Video Playback Mode. G-Sensor: The G-Sensor is an accelerometer that can detect an impact caused by an accident. If the G-Sensor is triggered, the current video segment will automatically be locked so that it is not overwritten by cyclical recording. The sensitivity of the G-Sensor can be adjusted in settings. To Start and Stop recording video, press the OK button The Red Record Dot starts flashing or stops flashing, and the record duration changes to display total time recorded. To Lock a video while it is being recorded, press the FILE LOCK button The Lock Current File message and the Lock icon will appear on the screen: To Toggle the Microphone On / Off, press the UP button The Microphone Mute icon will toggle on the screen: To Toggle the Screen On / Off, press the DOWN button The screen will toggle on and off. This device can be used to capture high-resolution still photos using its built-in camera. The images are stored on the removable SD Card memory. To take a picture Press the OK button. The screen flashes black and the image briefly freezes to show that a picture was taken. To digitally zoom in or out Press and hold the UP or DOWN buttons. The image zooms in or out, and indicates the zoom factor on the screen. (1x - 4x) Video and Photo Playback Modes This device stores video and pictures on its removable SD Card Memory. Playback mode will allow you to review the saved video and photos, and play back the video with sound. File Selection Screen To move forward or backward in the list of saved files Press the UP or DOWN buttons while on the video selection screen. The red box moves to select the next or previous file. If you are at the beginning or end of a page, this may cause you to flip to the previous or next page. To play a selected file: Press the OK button while on the file selection screen. The video will begin playing. Video Playback Screen To play or pause video playback Press the OK button. The video will begin playing or pause playback, and the Play / Pause icon will toggle. To Fast forward or rewind the video Press the UP / DOWN buttons. The video will begin playing faster or rewind, and the playback speed will show on the screen as 2X, 4X, etc. To return to the list of saved files while in the middle of video playback Press the MODE button. You will be returned to the video selection screen. To adjust the playback audio volume Press the MENU button to bring up the playback menu. Make sure VOLUME is highlighted, and press OK. Press the arrow keys to select a volume level, 0-10. The selected volume level will have a red box around it. Press OK again to confirm and close. Finally, press MENU to exit. To delete a file Press the MENU button to bring up the Playback menu. Press the down arrow to highlight DELETE, and press OK to confirm. To delete just one file, highlight the icon with just one item in the trash, and press OK to confirm. You will then see the "select a file" dialog. Use the arrow keys to highlight the file you want to delete with the red box, then press OK to confirm. The "Delete Selected File" Dialog will appear. Make sure YES is selected, and then press OK to confirm. The file will be deleted and you will return to the video selection screen. Video Protection Screen To Lock a video or image while in playback mode Press the MENU button to bring up the Playback menu. Press the down arrow until PROTECT is highlighted, and press OK to confirm. To protect just one file, highlight the book and key icon, then press OK to confirm. You will then see the "select a file" dialog. Use the arrow keys to highlight the file you want to protect with the red box, then press OK to confirm. You'll see the "Protect Selected File" dialog. Press the UP arrow to ensure that YES is selected, then press OK to confirm. The selected picture will now show a lock icon. This means this file will not be overwritten by continuous loop recording in Dash Cam mode. While in Video or Still Photo mode, press the MENU button, scroll to the language menu, and press OK to enter the Language Selection menu. Use the UP or DOWN arrows to select the desired language, and then press OK to confirm. The following languages are supported: English, Dutch, French, German, Portuguese, Russian, Spanish and Chinese. Settings Note: If you are currently recording (0) you'll need to stop recording with the OK button first. While in VIDEO or STILL PHOTO mode with the CAMERA button first. While in VIDEO mode, press the MENU button once to enter the menu selection screen. Verify that Video Settings is selected, then press OK to confirm. Press the UP and DOWN arrows to select the setting you'd like to modify, then press the OK button to confirm. A window on the right edge of the screen will display the available options. Use the UP and DOWN arrows to make your selection, then press OK to confirm. A list of the settings and their meanings are shown on the next page. Adjusting Video Settings Video Settings Video Settings This sets the level of detail in the video. FHD will give you the best image, but will take up the most memory. Movie Quality Select between Super High Quality (SHQ) and High Quality (HQ) Movie Clip Time This selects the length of the video clips the system records. Options range from 1 minute to 10 minutes. Auto Power Off Once power is removed from the device, it automatically shuts down. This option lets you set how many seconds to continue recording video after power is removed. Motion REC Time When the Motion Event REC feature is turned on, the camera will analyze the image and determine when the image has changed substantially, and automatically start recording for you. Leave this feature on if you want to record video when you're moving, and stop recording video when stopped. Microphone If you do not want this device to record audio with its internal microphone, turn this setting off. MIC sensitivity Set the sensitivity of the microphone. Scene Select between Auto, Sport, Portrait, Landscape, Snow, Beach, and Fireworks. Exposure In very bright environments, use a positive EV. In dark environments use negative EV. Options between -2 and +2 are available. White Balance You can adjust the white balance based on the ambient lighting. Options include: Auto, Daylight, Cloudy, Fluorescent 1, Fluorescent 2, and Fluorescent 3. To Adjust General Settings NOTE: If you are currently recording video (0) you'll need to stop recording with the OK button first. While in VIDEO or STILL PHOTO mode, press the MENU button once to enter the menu selection screen. Verify that Still Settings is selected, then press OK to confirm. The selected picture will now show a lock icon. This means this file will not be overwritten by continuous loop recording in Dash Cam mode. While in Video or Still Photo mode, press the MENU button, scroll to the language menu, and press OK to enter the Language Selection menu. Use the UP or DOWN arrows to select the desired language, and then press OK to confirm. The following languages are supported: English, Dutch, French, German, Portuguese, Russian, Spanish and Chinese. Settings Note: If you are currently recording (0) you'll need to stop recording with the OK button first. While in VIDEO or STILL PHOTO mode with the CAMERA button first. While in VIDEO mode, press the MENU button once to enter the menu selection screen. Verify that Video Settings is selected, then press OK to confirm. Press the UP and DOWN arrows to select the setting you'd like to modify, then press the OK button to confirm. A window on the right edge of the screen will display the available options. Use the UP and DOWN arrows to make your selection, then press OK to confirm. A list of the settings and their meanings are shown in the next section. General Settings Beep Sound If you don't want the device to beep on every button press, turn this option Off. Idle Power Off Automatically turns the unit off if no buttons are pressed within 1 or 5 minutes if no video is being recorded. Date/Time Use this to set the current time and date. Date Format Sets the date format. TV System Lets you choose between NTSC (United States) and PAL (Europe) HDMI Output Lets you choose between 720P and 1080P on the HDMI Output. Screen Flicker This sets the screen refresh rate. Options include 50 Hz and 60 Hz. USB Function If you want your camera to behave like a Mass Storage device (flash drive) when connected to a computer, select MSC. If you want to use it as a webcam with your computer, select PCAM. Screen Rotate Allows you to flip the screen vertically for upside-down operation. Screen Saver Allows you to set a timeout for the screen to go black when not in use. Options include 1 minute and 3 minutes. G-Sensor Level Sets the sensitivity of the G-Sensor, from 0 (off) to 4 (max) Motion Detector Sets the sensitivity of the Motion sensor, from 0 (off) to 3 (max) GPS Status This allows you to view the raw data from the GPS satellites that are available in your area. Time Zone Select Set the time zone you're currently in. Restore Defaults Resets the system to its default settings. Format SD-Card If you want to completely erase all the movies and files on the SD-card, select this option. Be careful, all your data will be lost. SD-Card INFO See how much space remains on the SD Card. FW Version Get the firmware version information. While in Still Photo mode, press the MENU button to enter the menu selection screen. Verify that Still Settings is selected, then press OK to confirm. Press the UP and DOWN arrows to select the setting you'd like to modify, then press the OK button to confirm. A window on the right edge of the screen will display the available options. Use the UP and DOWN arrows to make your selection, then press OK to confirm. Still Photo Mode Settings Still Image Size This sets the level of detail in the photo. Higher M indicates more megapixels, which will give you a sharper image, but take up more memory. Options between 1M and 14M are available. Still Quality Select between Super High Quality (SHQ) and High Quality (HQ) Scene Select between Auto, Sport, Portrait, Landscape, Snow, Beach, and Fireworks. Exposure In very bright environments, use a positive EV. In dark environments use negative EV. Options between -2 and +2 are available. White Balance You can adjust the white balance based on the ambient lighting. Options include: Auto, Daylight, Cloudy, Fluorescent 1, Fluorescent 2, and Fluorescent 3. ISO Sensitivity Increasing ISO will make the camera more sensitive to light. Try increasing ISO in low-light conditions, or leave it set to "Auto" Color Adjusts color saturation. Options include: natural, bright, and grey. Effect Photo effects include: Normal, retro, black and white, relief, negative, drawing, painting, crayon. Connecting to a Computer To connect your camera to a Computer Connect the camera to your computer using the included USB to Mini-USB Cable. By default, your device connects to your computer in Mass Storage mode, and acts like a flash drive. Videos can be viewed with any standard video player that supports .avi files. NOTE: Quicktime, the native video player for Mac, only supports specific types of .avi files and cannot playback this camera's videos. For links to third party players that will work on Mac, visit [www.cobra.com/support/software-downloads](http://www.cobra.com/support/software-downloads). Movies that are locked begin with "SOS" and movies that are not locked begin with "MOV". Note that if the Memory card gets too full, videos that are not locked will be overwritten to make room for new videos. If you want to save any videos that begin with "MOV", you should copy them to your computer, or lock the files. To switch the camera's USB function if you prefer to connect your camera to your PC as a web or video camera, you can change this setting in the settings menu. Disconnect the camera from your PC, enter the settings menu, and change the USB Function to PCAM. Then, when you reconnect your camera to your PC, it will use the function. NOTE: Start your web cam application before connecting the camera. If you want to review the videos alongside the GPS position on a map, then you'll need to download Cobra's Video player from: [www.cobra.com/dashcamsoftware](http://www.cobra.com/dashcamsoftware) See the next section for how to use this software. Using Cobra's Video Player Using Drive HD™ Dash Cam Software The Drive HD Dash Cam player allows you to view your videos along with recorded GPS location, speed, direction, and G-Sensor data. To download Drive HD Dash Cam player on your PC please visit [www.cobra.com/dashcamsoftware](http://www.cobra.com/dashcamsoftware) and select the software link for the CDR 840. Install and open Drive HD Dash Cam player. Click on the folder icon and look for "Removable Disk" or point to the directory or file you'd like to play back. To Erase a file, click on the RECYCLE icon. To pause or play video, or skip to the next / previous file, click the track navigation buttons at the bottom. Using Cobra's Dash Cam Software The player will group together files that were shot sequentially. Those files are displayed in the "group" list at the bottom left. Individual files are also shown in the list in the bottom right. The Map View in the upper right shows the route you took for the duration the file was recorded. Visual Angle: 118 degrees Sensor: 5 MP CMOS Video resolution: 1080P 1920x1080 30 fps 720P 1280x720 60 fps 720P 1280x720 30 fps 480P 640x480 30 fps Video Format: .avi GPS Logging: Supported Picture Resolution: 4032x3094 (Max. 14 MP) Picture Format: JPEG White Balance: Auto Color Effect: Auto Continuous Loop Recording: Supported Motion Detection: Supported Date and Time: Supported Media Supported: Supported USB Mass Storage: Supported USB 2.0 USB Web Camera: Supported

Supported Player Software: Use Operating System's video player or Cobra Drive HD player USB Interface: USB 2.0 USB Web Camera: Supported USB Mass Storage: Supported Display Screen: 1.5" TFT Battery: Rechargeable Lithium-Ion Camera Capacity 1080P Recording time with 8GB card (included): 120 minutes 1080P Recording time with 16GB card: 240 minutes 1080P Recording time with 32GB card (max): 480 minutes Product Settings & Support For any questions about operating or installing this new Cobra product, PLEASE CONTACT COBRA FIRST., do not return the product to the retail store. The contact information for Cobra will vary depending on the country in which you purchased and utilize the product. For the latest contact information, please go to [www.cobra.com/support](http://www.cobra.com/support) For products purchased in the U.S.A., you may also call 1-800-262-7212 (1-800-COBRA-12). For Products Purchased in the U.S.A., if your product should require factory service, please go to [www.cobra.com/support](http://www.cobra.com/support) and follow the instructions for returning your product to the Cobra Factory Service Department for service. Troubleshooting If your unit does not appear to be operating properly, please follow these troubleshooting steps: Make sure the power cord is properly connected. Make sure the socket of your vehicle's cigarette lighter is clean and free of corrosion. Make sure the power cord's cigarette lighter adapter is firmly seated in your cigarette lighter, and the Status LED is on. Check the power cord fuse. (Unscrew the ribbed end cap of the cigarette lighter adapter and examine the fuse. If required, replace it with a 2-amp fuse only.) For detailed and up-to-date FAQ's, please visit [www.cobra.com/support/faqs](http://www.cobra.com/support/faqs). Trademark Acknowledgement Cobra, the snake design, Drive HD™, the d design, and Record your ride™ are proprietary trademarks of Cobra Electronics Corporation, USA. Other trademarks and trade names are those of their respective owners. Cobra Electronics Corporation™ is a trademark of Cobra Electronics Corporation, USA. HDMI, the HDMI logo, and High-Definition Multimedia Interface are trademarks or HDMI registered trademarks of HDMI licensing LLC in the United States and other countries. NOTE: This device complies with part 15 of FCC rules: Operation is subject to the following two conditions: (1) This device may not cause harmful interference, and (2) This device must accept any interference received including interference that may cause undesired operation. CAUTION: Modifications or parts not approved by Cobra Electronics Corporation may violate FCC Rules and void authority to operate this equipment. This device complies with RSS-310 of Industry Canada. Operation is subject to the condition that this device does not cause harmful interference. CAN ICES-3B/NMB-3B.DISPOSAL OF ELECTRONICS EQUIPMENT: This product may contain hazardous substances that could impact health and the environment if not disposed of properly. The crossed out wheeled bin symbol indicates that the product should not be disposed of along with household waste. It should be handed over to an applicable collection point for the recycling of electrical equipment. By ensuring that this product is disposed of correctly you will help/prevent potential negative impact on the environment. If you need more information on the collection, reuse and recycling systems, please contact your local civic office or the shop where it was originally purchased. This product contains chemicals known to the State of California to cause cancer and birth defects or other reproductive harm. Documents / ResourcesReferences Update Your Device Update Your Device Product Help/Manuals FAQsDownload manualHere you can download full pdf version of manual, it may contain additional safety instructions, warranty information, FCC rules, etc.Download Cobra CDR 840, CDR 840E, CDR 840C - 1080P FHD DASH CAM Manual about ManualsNet Legal Privacy policy Terms of use Indexes Brands Index Categories Index A1A1©2014 Cobra Electronics Corporation©500 West Cortland StreetChicago, Illinois 60707 USAwww.cobra.comCustomer AssistanceSafe Driving Motorists, as well as operators of emergency or service vehicles, are expected to exercise all due caution while using this product, and to obey all applicable traffic laws.Security of Your Vehicle Before leaving your vehicle, always remember to conceal this device in order to reduce the possibility of break-in and theft.PrivacyThis device may not be used to violate the privacy rights of others. In no way will Cobra Electronics or its subsidiaries be responsible for inappropriate use of this product. It is the sole responsibility of the buyer to consult legal counsel for the interpretation of any laws applicable to the area of intended use of this product. IntroductionPrinted in China Part No. 480-957-PVersion B/ser Manual Page 2EnglishA2 A3 21•Introduction IntroductionCustomer InformationSpeakerOn / Off Button (Hold to turn off)Mode ButtonMini USB ConnectorFor charging and connection to PCMicro SD Card SlotAccepts Memory Card to Store Video and Photos, up to 32 GBUp / Down Menu Navigation ButtonsMenu ButtonCamera LensFile Lock ButtonRecord / OK ButtonReset ButtonMini HDMI PortFor connection to Television or Monitor. (Cable not included.)LED Status IndicatorSuction Cup Locking LeverAngle Locking Knob12V DC Power JackGPS ReceiverSuction Cup Locking KnobMicrophone HoleMounting ScrewLCD Display\*\*Customer InformationWarranty\*-English24 Page Page 4CDR 810 Functions Mounting the CDR 810NOTE: This device complies with part 15 of FCC rules: Operation is subject to the following two conditions: (1) This device may not cause harmful interference, and (2) This device must accept any interference received including interference that may cause undesired operation.CAUTION: Modifications or parts not approved by Cobra Electronics Corporation may violate FCC Rules and void authority to operate this equipment.This device complies with Canadian ICES-003. CAN ICES-3B/NMB-3B.CDR 8101236745899101121314153OperationTurn on/off: press the on/off button to turn the unit on, press and hold the on/off button to turn the unit off.Continuous Cyclical Recording: Cyclical recording means that once the memory card is full this camera will continuously overwrite the oldest footage recorded. To protect a clip so that it will not be overwritten, press the Lock File Button. The icon will show on the screen. Navigating the Menu: Press the Menu Button to enter into menu. Press the Menu Button again to cycle through basic and mode specific settings lists. To navigate through the menu use the Up and Down buttons, which double as Rec and Mic respectively. Press the File Lock/Enter Button to enter specic settings and select specic options. Pressing the Menu Button again will exit the menu screen. Video: In recording mode, press the Record Button to start recording with the REC indicator light ashing, press the Record Button again to stop recording and the le will be saved automatically.Photograph: Press the Photograph/Playback Button to enter photograph mode. Press the button again to snap still photos. To return to video mode press the Record Button.16DVR810\_MANL.indd 1 8/7/13 9:03 AMDash Cam (Model # CDR 840) Heavy Duty Suction Cup Mount 8GB Micro SD Card (installed) Cigarette Lighter AdapterPage 5Printed in China Part No. 480-893-P Version CNOTE: This device complies with part 15 of FCC rules: Operation is subject to the following 1236745899101121314153Turn on/off: press the on/off button to turn the unit on, press and hold the on/off button to turn the unit off.Continuous Cyclical Recording: Cyclical recording means that once the memory card is full this camera will continuously overwrite the oldest footage recorded. To protect a clip so that it will not be overwritten, press the Lock File Button. The icon will show on the screen. Navigating the Menu: Press the Menu Button to enter into menu. Press the Menu Button again to cycle through basic and mode specific settings lists. To navigate through the menu use the Up and Down buttons, which double as Rec and Mic respectively. Press the File Lock/Enter Button to enter specic settings and select specic options. Pressing the Menu Button again will exit the menu screen. Video: In recording mode, press the Record Button to start recording with the REC indicator light ashing, press the Record Button again to stop recording and the le will be saved automatically.Photograph: Press the Photograph/Playback Button to enter photograph mode. Press the button again to snap still photos. To return to video mode press the Record Button.16DVR810\_MANL.indd 1 8/7/13 9:03 AMPage 6Page 7English8 Your Dash CamYour Dash Cam•ModeAWBTW1XVGA•100\_DSC/MOV\_0001.AVI1/601/01/2014 18:29:10[00:00:12]Mode Page 8Page 912 13Your Dash CamWhile in Video or Still Photo mode, press the MENU button, Use the UP or DOWN arrows to select the desired language, and then press OK •Your Dash Cam Page 10Page 11Page 12 18 19Your Dash CamYour Dash Cam•While in Still Photo mode, press the MENU button to enter the menu selection screen. Verify that Still Settings is selected, then press OK to conrm.Press the UP and DOWN arrows to select the setting you'd like to modify, then Use the UP and DOWN arrows to make your selection, then press OK to •Settings, and change the USB Function to PCAM. Page 13Page 14English22 23Your Dash CamSpecificationsVisual Angle ..... 118 degreesSensor ..... 5 MP CMOSVideo resolution ..... 1080P 1920x1080 30 fps ..... 720P 1280x720 60 fps ..... 720P 1280x720 30 fps ..... 480P 640x480 30 fpsGPS Logging ..... SupportedPicture Format ..... SupportedMedia Supported ..... SupportedDate and Time ..... SupportedUSB Mass Storage ..... SupportedUSB 2.0 USB Web Camera ..... Supportedn Make sure the power cord is properly connected.n Make sure the socket of your vehicle's cigarette lighter is clean and n Make sure the power cord's cigarette lighter adapter is firmly seated n Check the power cord fuse. (Unscrew the ribbed end cap of the For detailed and up-to-date FAQ's, please visit [www.cobra.com/support/faqs](http://www.cobra.com/support/faqs). Cobra, the snake design, Drive HD™, the d design, and Record your ride™ are proprietary trademarks of Cobra Electronics Corporation, USA. Other trademarks and trade names are those of their respective owners.Cobra Electronics Corporation™ is a trademark of Cobra Electronics Corporation, USA.HDMI, the HDMI logo, and High-Definition Multimedia Interface are trademarks or HDMI registered trademarks of HDMI licensing LLC in the United States and other countries.NOTE: This device complies with part 15 of FCC rules: Operation is subject to the following two conditions: (1) This device may not cause harmful interference, and (2) This device must accept any interference received including interference that may cause undesired operation.CAUTION: Modifications or parts not approved by Cobra Electronics Corporation may violate FCC Rules and void authority to operate this equipment.This device complies with RSS-310 of Industry Canada. Operation is subject to the condition that this device does not cause harmful interference. CAN ICES-3B/NMB-3B.DISPOSAL OF ELECTRONICS EQUIPMENT: This product may contain hazardous substances that could impact health and the environment if not disposed of properly. The crossed out wheeled bin symbol indicates that the product should not be disposed of along with household waste. It should be handed over to an applicable collection point for the recycling of electrical equipment. By ensuring that this product is disposed of correctly you will help/prevent potential negative impact on the environment. If you need more information on the collection, reuse and recycling systems, please contact your local civic office or the shop where it was originally purchased. WARNING: This product contains chemicals known to the State of California to cause cancer and birth defects or other reproductive harm. • Filter by Product Type Power Inverters Marine Radio CB Radio Recreational CB Radios Radar/Laser Detector Dash Cams Two-way Radios (Unlicensed) Two-way Radios (Licensed GMSR) Two-way Radios (Licensed LMR) Power Solutions Cobra Legacy Products A1A1©2014 Cobra Electronics Corporation©500 West Cortland StreetChicago, Illinois 60707 USAwww.cobra.comCustomer AssistanceSafe Driving Motorists, as well as operators of emergency or service vehicles, are expected to exercise all due caution while using this product, and to obey all applicable traffic laws.Security of Your Vehicle Before leaving your vehicle, always remember to conceal this device in order to reduce the possibility of break-in and theft.PrivacyThis device may not be used to violate the privacy rights of others. In no way will Cobra Electronics or its subsidiaries be responsible for inappropriate use of this product. It is the sole responsibility of the buyer to consult legal counsel for the interpretation of any laws applicable to the area of intended use of this product. IntroductionPrinted in China Part No. 480-957-PVersion B/ser Manual Page 2EnglishA2 A3 21•Introduction IntroductionCustomer InformationSpeakerOn / Off Button (Hold to turn off)Mode ButtonMini USB ConnectorFor charging and connection to PCMicro SD Card SlotAccepts Memory Card to Store Video and Photos, up to 32 GBUp / Down Menu Navigation ButtonsMenu ButtonCamera LensFile Lock ButtonRecord / OK ButtonReset ButtonMini HDMI PortFor connection to Television or Monitor. (Cable not included.)LED Status IndicatorSuction Cup Locking LeverAngle Locking Knob12V DC Power JackGPS ReceiverSuction Cup Locking KnobMicrophone HoleMounting ScrewLCD Display\*\*Customer InformationWarranty\*-English24 Page Page 4CDR 810 Functions Mounting the CDR 810NOTE: This device complies with part 15 of FCC rules: Operation is subject to the following two conditions: (1) This device may not cause harmful interference, and (2) This device must accept any interference received including interference that may cause undesired operation.CAUTION: Modifications or parts not approved by Cobra Electronics Corporation may violate FCC Rules and void authority to operate this equipment.This device complies with Canadian ICES-003. CAN ICES-3B/NMB-3B.CDR 8101236745899101121314153OperationTurn on/off: press the on/off button to turn the unit on, press and hold the on/off button to turn the unit off.Continuous Cyclical Recording: Cyclical recording means that once the memory card is full this camera will continuously overwrite the oldest footage recorded. To protect a clip so that it will not be overwritten, press the Lock File Button. The icon will show on the screen. Navigating the Menu: Press the Menu Button to enter into menu. Press the Menu Button again to cycle through basic and mode specific settings lists. To navigate through the menu use the Up and Down buttons, which double as Rec and Mic respectively. Press the File Lock/Enter Button to enter specic settings and select specic options. Pressing the Menu Button again will exit the menu screen. Video: In recording mode, press the Record Button to start recording with the REC indicator light ashing, press the Record Button again to stop recording and the le will be saved automatically.Photograph: Press the Photograph/Playback Button to enter photograph mode. Press the button again to snap still photos. To return to video mode press the Record Button.16DVR810\_MANL.indd 1 8/7/13 9:03 AMPage 6Page 7English8 Your Dash CamYour Dash Cam•ModeAWBTW1XVGA•100\_DSC/MOV\_0001.AVI1/601/01/2014 18:29:10[00:00:12]Mode Page 8Page 912 13Your Dash CamWhile in Video or Still Photo mode, press the MENU button, Use the UP or DOWN arrows to select the desired language, and then press OK •Your Dash Cam Page 10Page 11Page 12 18 19Your Dash CamYour Dash Cam•While in Still Photo mode, press the MENU button to enter the menu selection screen. Verify that Still Settings is selected, then press OK to conrm.Press the UP and DOWN arrows to select the setting you'd like to modify, then Use the UP and DOWN arrows to make your selection, then press OK to •Settings, and change the USB Function to PCAM. Page 13Page 14English22 23Your Dash CamSpecificationsVisual Angle ..... 118 degreesSensor ..... 5 MP CMOSVideo resolution ..... 1080P 1920x1080 30 fps ..... 720P 1280x720 60 fps ..... 720P 1280x720 30 fps ..... 480P 640x480 30 fpsGPS Logging ..... SupportedPicture Format ..... SupportedMedia Supported ..... SupportedDate and Time ..... SupportedUSB Mass Storage ..... SupportedUSB 2.0 USB Web Camera ..... Supportedn Make sure the power cord is properly connected.n Make sure the socket of your vehicle's cigarette lighter is clean and n Make sure the power cord's cigarette lighter adapter is firmly seated n Check the power cord fuse. (Unscrew the ribbed end cap of the For detailed and up-to-date FAQ's, please visit [www.cobra.com/support/faqs](http://www.cobra.com/support/faqs). Cobra, the snake design, Drive HD™, the d design, and Record your ride™ are proprietary trademarks of Cobra Electronics Corporation, USA. Other trademarks and trade names are those of their respective owners.Cobra Electronics Corporation™ is a trademark of Cobra Electronics Corporation, USA.HDMI, the HDMI logo, and High-Definition Multimedia Interface are trademarks or HDMI registered trademarks of HDMI licensing LLC in the United States and other countries.NOTE: This device complies with part 15 of FCC rules: Operation is subject to the following two conditions: (1) This device may not cause harmful interference, and (2) This device must accept any interference received including interference that may cause undesired operation.CAUTION: Modifications or parts not approved by Cobra Electronics Corporation may violate FCC Rules and void authority to operate this equipment.This device complies with RSS-310 of Industry Canada. Operation is subject to the condition that this device does not cause harmful interference. CAN ICES-3B/NMB-3B.DISPOSAL OF ELECTRONICS EQUIPMENT: This product may contain hazardous substances that could impact health and the environment if not disposed of properly. The crossed out wheeled bin symbol indicates that the product should not be disposed of along with household waste. It should be handed over to an applicable collection point for the recycling of electrical equipment. By ensuring that this product is disposed of correctly you will help/prevent potential negative impact on the environment. If you need more information on the collection, reuse and recycling systems, please contact your local civic office or the shop where it was originally purchased. WARNING: This product contains chemicals known to the State of California to cause cancer and birth defects or other reproductive harm. •

Supported Player Software: Use Operating System's video player or Cobra Drive HD player USB Interface: USB 2.0 USB Web Camera: Supported USB Mass Storage: Supported Display Screen: 1.5" TFT Battery: Rechargeable Lithium-Ion Camera Capacity 1080P Recording time with 8GB card (included): 120 minutes 1080P Recording time with 16GB card: 240 minutes 1080P Recording time with 32GB card (max): 480 minutes Product Settings & Support For any questions about operating or installing this new Cobra product, PLEASE CONTACT COBRA FIRST., do not return the product to the retail store. The contact information for Cobra will vary depending on the country in which you purchased and utilize the product. For the latest contact information, please go to [www.cobra.com/support](http://www.cobra.com/support) For products purchased in the U.S.A., you may also call 1-800-262-7212 (1-800-COBRA-12). For Products Purchased in the U.S.A., if your product should require factory service, please go to [www.cobra.com/support](http://www.cobra.com/support) and follow the instructions for returning your product to the Cobra Factory Service Department for service. Troubleshooting If your unit does not appear to be operating properly, please follow these troubleshooting steps: Make sure the power cord is properly connected. Make sure the socket of your vehicle's cigarette lighter is clean and free of corrosion. Make sure the power cord's cigarette lighter adapter is firmly seated in your cigarette lighter, and the Status LED is on. Check the power cord fuse. (Unscrew the ribbed end cap of the cigarette lighter adapter and examine the fuse. If required, replace it with a 2-amp fuse only.) For detailed and up-to-date FAQ's, please visit [www.cobra.com/support/faqs](http://www.cobra.com/support/faqs). Trademark Acknowledgement Cobra, the snake design, Drive HD™, the d design, and Record your ride™ are proprietary trademarks of Cobra Electronics Corporation, USA. Other trademarks and trade names are those of their respective owners. Cobra Electronics Corporation™ is a trademark of Cobra Electronics Corporation, USA. HDMI, the HDMI logo, and High-Definition Multimedia Interface are trademarks or HDMI registered trademarks of HDMI licensing LLC in the United States and other countries. NOTE: This device complies with part 15 of FCC rules: Operation is subject to the following two conditions: (1) This device may not cause harmful interference, and (2) This device must accept any interference received including interference that may cause undesired operation. CAUTION: Modifications or parts not approved by Cobra Electronics Corporation may violate FCC Rules and void authority to operate this equipment. This device complies with RSS-310 of Industry Canada. Operation is subject to the condition that this device does not cause harmful interference. CAN ICES-3B/NMB-3B.DISPOSAL OF ELECTRONICS EQUIPMENT: This product may contain hazardous substances that could impact health and the environment if not disposed of properly. The crossed out wheeled bin symbol indicates that the product should not be disposed of along with household waste. It should be handed over to an applicable collection point for the recycling of electrical equipment. By ensuring that this product is disposed of correctly you will help/prevent potential negative impact on the environment. If you need more information on the collection, reuse and recycling systems, please contact your local civic office or the shop where it was originally purchased. This product contains chemicals known to the State of California to cause cancer and birth defects or other reproductive harm. Documents / ResourcesReferences Update Your Device Update Your Device Product Help/Manuals FAQsDownload manualHere you can download full pdf version of manual, it may contain additional safety instructions, warranty information, FCC rules, etc.Download Cobra CDR 840, CDR 840E, CDR 840C - 1080P FHD DASH CAM Manual about ManualsNet Legal Privacy policy Terms of use Indexes Brands Index Categories Index A1A1©2014 Cobra Electronics Corporation©500 West Cortland StreetChicago, Illinois 60707 USAwww.cobra.comCustomer AssistanceSafe Driving Motorists, as well as operators of emergency or service vehicles, are expected to exercise all due caution while using this product, and to obey all applicable traffic laws.Security of Your Vehicle Before leaving your vehicle, always remember to conceal this device in order to reduce the possibility of break-in and theft.PrivacyThis device may not be used to violate the privacy rights of others. In no way will Cobra Electronics or its subsidiaries be responsible for inappropriate use of this product. It is the sole responsibility of the buyer to consult legal counsel for the interpretation of any laws applicable to the area of intended use of this product. IntroductionPrinted in China Part No. 480-957-PVersion B/ser Manual Page 2EnglishA2 A3 21•Introduction IntroductionCustomer InformationSpeakerOn / Off Button (Hold to turn off)Mode ButtonMini USB ConnectorFor charging and connection to PCMicro SD Card SlotAccepts Memory Card to Store Video and Photos, up to 32 GBUp / Down Menu Navigation ButtonsMenu ButtonCamera LensFile Lock ButtonRecord / OK ButtonReset ButtonMini HDMI PortFor connection to Television or Monitor. (Cable not included.)LED Status IndicatorSuction Cup Locking LeverAngle Locking Knob12V DC Power JackGPS ReceiverSuction Cup Locking KnobMicrophone HoleMounting ScrewLCD Display\*\*Customer InformationWarranty\*-English24 Page Page 4CDR 810 Functions Mounting the CDR 810NOTE: This device complies with part 15 of FCC rules: Operation is subject to the following two conditions: (1) This device may not cause harmful interference, and (2) This device must accept any interference received including interference that may cause undesired operation.CAUTION: Modifications or parts not approved by Cobra Electronics Corporation may violate FCC Rules and void authority to operate this equipment.This device complies with Canadian ICES-003. CAN ICES-3B/NMB-3B.CDR 8101236745899101121314153OperationTurn on/off: press the on/off button to turn the unit on, press and hold the on/off button to turn the unit off.Continuous Cyclical Recording: Cyclical recording means that once the memory card is full this camera will continuously overwrite the oldest footage recorded. To protect a clip so that it will not be overwritten, press the Lock File Button. The icon will show on the screen. Navigating the Menu: Press the Menu Button to enter into menu. Press the Menu Button again to cycle through basic and mode specific settings lists. To navigate through the menu use the Up and Down buttons, which double as Rec and Mic respectively. Press the File Lock/Enter Button to enter specic settings and select specic options. Pressing the Menu Button again will exit the menu screen. Video: In recording mode, press the Record Button to start recording with the REC indicator light ashing, press the Record Button again to stop recording and the le will be saved automatically.Photograph: Press the Photograph/Playback Button to enter photograph mode. Press the button again to snap still photos. To return to video mode press the Record Button.16DVR810\_MANL.indd 1 8/7/13 9:03 AMPage 6Page 7English8 Your Dash CamYour Dash Cam•ModeAWBTW1XVGA•100\_DSC/MOV\_0001.AVI1/601/01/2014 18:29:10[00:00:12]Mode Page 8Page 912 13Your Dash CamWhile in Video or Still Photo mode, press the MENU button, Use the UP or DOWN arrows to select the desired language, and then press OK •Your Dash Cam Page 10Page 11Page 12 18 19Your Dash CamYour Dash Cam•While in Still Photo mode, press the MENU button to enter the menu selection screen. Verify that Still Settings is selected, then press OK to conrm.Press the UP and DOWN arrows to select the setting you'd like to modify, then Use the UP and DOWN arrows to make your selection, then press OK to •Settings, and change the USB Function to PCAM. Page 13Page 14English22 23Your Dash CamSpecificationsVisual Angle ..... 118 degreesSensor ..... 5 MP CMOSVideo resolution ..... 1080P 1920x1080 30 fps ..... 720P 1280x720 60 fps ..... 720P 1280x720 30 fps ..... 480P 640x480 30 fpsGPS Logging ..... SupportedPicture Format ..... SupportedMedia Supported ..... SupportedDate and Time ..... SupportedUSB Mass Storage ..... SupportedUSB 2.0 USB Web Camera ..... Supportedn Make sure the power cord is properly connected.n Make sure the socket of your vehicle's cigarette lighter is clean and n Make sure the power cord's cigarette lighter adapter is firmly seated n Check the power cord fuse. (Unscrew the ribbed end cap of the For detailed and up-to-date FAQ's, please visit [www.cobra.com/support/faqs](http://www.cobra.com/support/faqs). Cobra, the snake design, Drive HD™, the d design, and Record your ride™ are proprietary trademarks of Cobra Electronics Corporation, USA. Other trademarks and trade names are those of their respective owners.Cobra Electronics Corporation™ is a trademark of Cobra Electronics Corporation, USA.HDMI, the HDMI logo, and High-Definition Multimedia Interface are trademarks or HDMI registered trademarks of HDMI licensing LLC in the United States and other countries.NOTE: This device complies with part 15 of FCC rules: Operation is subject to the following two conditions: (1) This device may not cause harmful interference, and (2) This device must accept any interference received including interference that may cause undesired operation.CAUTION: Modifications or parts not approved by Cobra Electronics Corporation may violate FCC Rules and void authority to operate this equipment.This device complies with RSS-310 of Industry Canada. Operation is subject to the condition that this device does not cause harmful interference. CAN ICES-3B/NMB-3B.DISPOSAL OF ELECTRONICS EQUIPMENT: This product may contain hazardous substances that could impact health and the environment if not disposed of properly. The crossed out wheeled bin symbol indicates that the product should not be disposed of along with household waste. It should be handed over to an applicable collection point for the recycling of electrical equipment. By ensuring that this product is disposed of correctly you will help/prevent potential negative impact on the environment. If you need more information on the collection, reuse and recycling systems, please contact your local civic office or the shop where it was originally purchased. WARNING: This product contains chemicals known to the State of California to cause cancer and birth defects or other reproductive harm. •

Supported Player Software: Use Operating System's video player or Cobra Drive HD player USB Interface: USB 2.0 USB Web Camera: Supported USB Mass Storage: Supported Display Screen: 1.5" TFT Battery: Rechargeable Lithium-Ion Camera Capacity 1080P Recording time with 8GB card (included): 120 minutes 1080P Recording time with 16GB card: 240 minutes 1080P Recording time with 32GB card (max): 480 minutes Product Settings & Support For any questions about operating or installing this new Cobra product, PLEASE CONTACT COBRA FIRST., do not return the product to the retail store. The contact information for Cobra will vary depending on the country in which you purchased and utilize the product. For the latest contact information, please go to [www.cobra.com/support](http://www.cobra.com/support) For products purchased in the U.S.A., you may also call 1-800-262-7212 (1-800-COBRA-12). For Products Purchased in the U.S.A., if your product should require factory service, please go to [www.cobra.com/support](http://www.cobra.com/support) and follow the instructions for returning your product to the Cobra Factory Service Department for service. Troubleshooting If your unit does not appear to be operating properly, please follow these troubleshooting steps: Make sure the power cord is properly connected. Make sure the socket of your vehicle's cigarette lighter is clean and free of corrosion. Make sure the power cord's cigarette lighter adapter is firmly seated in your cigarette lighter, and the Status LED is on. Check the power cord fuse. (Unscrew the ribbed end cap of the cigarette lighter adapter and examine the fuse. If required, replace it with a 2-amp fuse only.) For detailed and up-to-date FAQ's, please visit [www.cobra.com/support/faqs](http://www.cobra.com/support/faqs). Trademark Acknowledgement Cobra, the snake design, Drive HD™, the d design, and Record your ride™ are proprietary trademarks of Cobra Electronics Corporation, USA. Other trademarks and trade names are those of their respective owners. Cobra Electronics Corporation™ is a trademark of Cobra Electronics Corporation, USA. HDMI, the HDMI logo, and High-Definition Multimedia Interface are trademarks or HDMI registered trademarks of HDMI licensing LLC in the United States and other countries. NOTE: This device complies with part 15 of FCC rules: Operation is subject to the following two conditions: (1) This device may not cause harmful interference, and (2) This device must accept any interference received including interference that may cause undesired operation. CAUTION: Modifications or parts not approved by Cobra Electronics Corporation may violate FCC Rules and void authority to operate this equipment. This device complies with RSS-310 of Industry Canada. Operation is subject to the condition that this device does not cause harmful interference. CAN ICES-3B/NMB-3B.DISPOSAL OF ELECTRONICS EQUIPMENT: This product may contain hazardous substances that could impact health and the environment if not disposed of properly. The crossed out wheeled bin symbol indicates that the product should not be disposed of along with household waste. It should be handed over to an applicable collection point for the recycling of electrical equipment. By ensuring that this product is disposed of correctly you will help/prevent potential negative impact on the environment. If you need more information on the collection, reuse and recycling systems, please contact your local civic office or the shop where it was originally purchased. This product contains chemicals known to the State of California to cause cancer and birth defects or other reproductive harm. Documents / ResourcesReferences Update Your Device Update Your Device Product Help/Manuals FAQsDownload manualHere you can download full pdf version of manual, it may contain additional safety instructions, warranty information, FCC rules, etc.Download Cobra CDR 840, CDR 840E, CDR 840C - 1080P FHD DASH CAM Manual about ManualsNet Legal Privacy policy Terms of use Indexes Brands Index Categories Index A1A1©2014 Cobra Electronics Corporation©500 West Cortland StreetChicago, Illinois 60707 USAwww.cobra.comCustomer AssistanceSafe Driving Motorists, as well as operators of emergency or service vehicles, are expected to exercise all due caution while using this product, and to obey all applicable traffic laws.Security of Your Vehicle Before leaving your vehicle, always remember to conceal this device in order to reduce the possibility of break-in and theft.PrivacyThis device may not be used to violate the privacy rights of others. In no way will Cobra Electronics or its subsidiaries be responsible for inappropriate use of this product. It is the sole responsibility of the buyer to consult legal counsel for the interpretation of any laws applicable to the area of intended use of this product. IntroductionPrinted in China Part No. 480-957-PVersion B/ser Manual Page 2EnglishA2 A3 21•Introduction IntroductionCustomer InformationSpeakerOn / Off Button (Hold to turn off)Mode ButtonMini USB ConnectorFor charging and connection to PCMicro SD Card SlotAccepts Memory Card to Store Video and Photos, up to 32 GBUp / Down Menu Navigation ButtonsMenu ButtonCamera LensFile Lock ButtonRecord / OK ButtonReset ButtonMini HDMI PortFor connection to Television or Monitor. (Cable not included.)LED Status IndicatorSuction Cup Locking LeverAngle Locking Knob12V DC Power JackGPS ReceiverSuction Cup Locking KnobMicrophone HoleMounting ScrewLCD Display\*\*Customer InformationWarranty\*-English24 Page Page 4CDR 810 Functions Mounting the CDR 810NOTE: This device complies with part 15 of FCC rules: Operation is subject to the following two conditions: (1) This device may not cause harmful interference, and (2) This device must accept any interference received including interference that may cause undesired operation.CAUTION: Modifications or parts not approved by Cobra Electronics Corporation may violate FCC Rules and void authority to operate this equipment.This device complies with Canadian ICES-003. CAN ICES-3B/NMB-3B.CDR 8101236745899101121314153OperationTurn on/off: press the on/off button to turn the unit on, press and hold the on/off button to turn the unit off.Continuous Cyclical Recording: Cyclical recording means that once the memory card is full this camera will continuously overwrite the oldest footage recorded. To protect a clip so that it will not be overwritten, press the Lock File Button. The icon will show on the screen. Navigating the Menu: Press the Menu Button to enter into menu. Press the Menu Button again to cycle through basic and mode specific settings lists. To navigate through the menu use the Up and Down buttons, which double as Rec and Mic respectively. Press the File Lock/Enter Button to enter specic settings and select specic options. Pressing the Menu Button again will exit the menu screen. Video: In recording mode, press the Record Button to start recording with the REC indicator light ashing, press the Record Button again to stop recording and the le will be saved automatically.Photograph: Press the Photograph/Playback Button to enter photograph mode. Press the button again to snap still photos. To return to video mode press the Record Button.16DVR810\_MANL.indd 1 8/7/13 9:03 AMPage 6Page 7English8 Your Dash CamYour Dash Cam•ModeAWBTW1XVGA•100\_DSC/MOV\_0