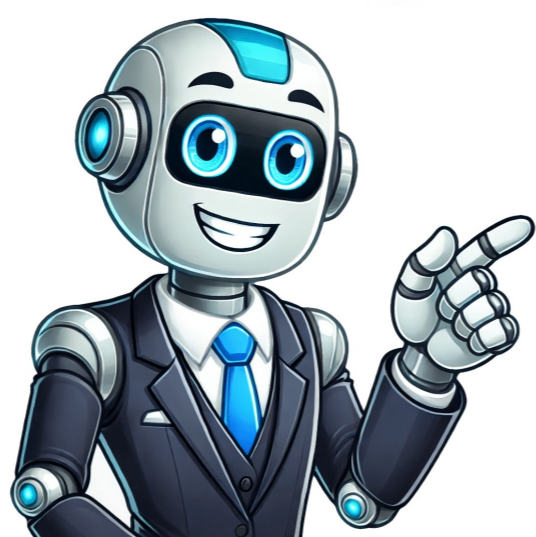


Continue



Southern Cross Invercargill Hospital is the southernmost private surgical hospital in the Southern Cross Healthcare network, it is widely known and used by people throughout the Southland and Queenstown-Wakatipu basin areas. The hospital features advanced theatre systems, including robotic orthopaedic surgery. Our highly skilled and caring team provide excellent care to 4,200 patients per year. Our elective surgical services include breast, endoscopy and gastroenterology; general; gynaecology; ophthalmology; oral and maxillofacial; orthopaedic; ear nose and throat; and urology surgery. Southern Cross Healthcare is one of the largest private healthcare networks in New Zealand. In the financial year ending 30 June 2025, we provided elective surgery to over 118,000 patients at our wholly owned and joint venture hospitals. We further support the health and wellbeing of New Zealanders through expert care in rehabilitation, physiotherapy, mental health and workplace health services. Southern Cross Healthcare is extremely proud to be an integral part of New Zealand's wider healthcare system; providing services to insurance-funded, ACC, Health New Zealand | Te Whaitu Ora, employer-funded and self-paying patients. As a for-purpose organisation under the Southern Cross Health Trust, we are here for New Zealanders today, and for generations to come. At Southern Cross Healthcare, we're proud to support our credentialled medical specialists in delivering innovative, patient-centred care. Breast surgeon Paul Samson, who operates from both Southern Cross Invercargill Hospital and Southern Cross Central Lakes Hospital in Queenstown, has introduced Magsseed technology. Magsseed is a less invasive technique to localise breast cancers before surgery. This innovation is improving surgical efficiency, reducing stress for patients, and delivering better health outcomes. We're proud to have partnered with Paul and the wider surgical team to bring this technology to the Southern region. It's a great example of whats possible when collaboration and clinical leadership come together to reimagine healthcare. #SouthernCrossHealthcare #SouthernCrossInvercargillHospital #SouthernCrossCentralLakesHospital https://www.southern-cross.co.nz/ Southern Cross Healthcare reposted this Chief Strategy Officer | Non Executive Director | Catalyst For Better Care | Health Industry Mentor | Proud Dad of Daughters 6d Edited I took this very average photo of Richard Peterson (orthopaedic surgeon) and I a little while ago, but I really like it. Our smiles are genuine, it captures a critical milestone in the formation of our latest joint venture partnership, but more than that, it represents an incredible relationship thats been built. At Southern Cross Healthcare, we're thrilled to announce the establishment of our newest joint venture in close partnership with many medical specialists, all united by a shared goal of advancing patient care for the Nelson/Tasman region. This partnership is grounded in a mutual commitment to high-quality, scalable, and sustainable healthcare models that support the current and future needs of the community. We're proud of what we've achieved together so far and excited for whats still to come. Well be sharing more soon At Southern Cross North Harbour Hospital, our teams are embracing a new structured way of working that places continuous improvement at the center of how we deliver patient care. Guided by the Connected Care Framework, this approach supports our teams to deliver consumer-centred care and operational excellence.Hospital Safety Quality Risk Manager, Jinsu, along with Quality Coordinator Danny, piloted a team-led Idea Board initiative in the wards. The board empowers staff with a clear, visible, structured, and easy-to-use process to share, track, and celebrate ideas that improve patient care, safety, and team efficiency.The response was fantastic. In just the first six weeks, 15 improvement ideas were raised, including several quick wins that directly improved both workflows and patient safety.One example: A team-led project to reorganise four medication rooms to improve usability and standardise layouts. The work was carried out during quiet periods, and was completed in under two weeks. It was a great example of collaboration, ownership, and putting patients first. These kinds of quick, high-impact changes are a great reminder that not all innovation requires large-scale projects. Often, it's the small ideas, raised by those closest to the work, that lead to the biggest improvements in patient experience, staff satisfaction, and safety. Photo left to right: Anna, Registered Nurse and Ward Quality Committee member. Monique, Healthcare Assistant. Karin, Clinical Nurse Lead and Chair of the Southern Cross North Harbour Hospital Ward Quality Committee. David, Supply Chain Coordinator. Joan, Registered Nurse and Quality Committee member. Jinsu, Safety Quality and Risk Manager. Danny, Quality Coordinator. Alex, Registered Nurse. #SouthernCrossHealthcare #SouthernCrossNorthHarbourHospital Exciting to see this major milestone come together great work, team! With the external works now complete, and the internal fit-out well underway, we're one step closer to opening our state-of-the-art new facility. The newly installed lift shaft is a vital part of our plan, enabling a bridge between our main hospital and the soon-to-open Wellington Surgical Centre, our dedicated orthopaedic day surgery facility on our campus. Thank you to everyone involved. We're getting closer! 1,524 followers 1w Southern Cross Healthcare Wellington | Project Update | 5,000m2 Take a sneak peek at the progress on Southern Cross Wellington, with the new lift shaft now installed a key piece to the link bridge connecting the new hospital extension to the existing facility. This critical section of infrastructure will streamline movement between buildings, improving efficiency for staff and patient care. Were building on a live site using Lean construction principles minimizing disruption, accelerating delivery, and keeping a laser focus on quality. Every detail is planned to maintain momentum and safety without compromising daily hospital operations. This milestone shows the impact of smart early-stage planning. From prefabrication to sequencing, we're reducing on-site time, increasing build accuracy, and staying ahead of programme. Stay tuned for the full link bridge lift later this month while we continue to deliver on our promises. #LeanDelivery #Expedite #SouthernCrossHealthcare Baek (David) Kim, Richard Paul, Rachael Lucas, Paul Coote, Martyn Yulle, Sophie Iozzo, Jonathan Herring, Kent Simmons, Shiloh F., Steve Yoon Incredible work from the Naylor Love team and partners on this milestone, which will significantly enhance our ability to deliver high-quality care to Wellingtonians. A huge thank you to everyone involved for your commitment to quality, collaboration and care throughout this journey. We cant wait to welcome patients. 37,494 followers 2w Edited A phenomenal outcome for the Southern Cross Healthcare project in Wellington set for delivery ahead of programme with an outstanding finish across the board. This is a milestone build for us, marking our first Green Star-certified hospital project in Wellington. Supported by The Building Intelligence Group, peddlethorp, Beca, GHD and Asterix Structures, this high-performing healthcare facility not only meets technical and clinical needs but also provides meaningful environmental and social value.Central to that achievement was our teams commitment to wellbeing on site. They went above and beyond to create a supportive environment, championing targeted health, safety and sustainability initiatives. By engaging external providers like Nuku Ora – an active Wellington region Wellington region and enable.me – financial strategy & coaching offering financial strategy and coaching, the team brought the principles of being a MATES in Construction NZ accredited site to life.Technical innovation played a key role too. We were appointed to complete a coordinated seismic restraint design for all building services. The design, completed by Ina Consulting Engineers Limited, was handed to our in-house BIM team to integrate directly into the model. The result? A fully coordinated solution that was seamlessly implemented on site. With design and installation running in close succession, we were able to reduce on-programme risks and work collaboratively with our subcontractors and suppliers to resolve any unexpected challenges along the way. This outcome reflects seamless collaboration across all disciplines and a huge collective effort from the whole team. A big thanks to all of the fantastic subs who brought their expertise to this project. We're delighted to share that Angela Hitchen has been appointed General Manager at Southern Cross Brightside Hospital, the latest step in her inspiring 13-year journey with Southern Cross Healthcare. Ange began her career in the operating theatres at Southern Cross North Harbour Hospital, driven by a passion for general surgery. She later took on the Safety, Quality & Risk portfolio for theatres a pivotal role that deepened her understanding of quality improvement and the Health and Disability Sector Standards. To broaden her clinical scope, Ange moved into the PACU department, gaining experience across both teams. From there, she progressed into Safety, Quality & Risk Coordinator and Manager roles, before stepping into the Clinical Operations Manager role, leading the Senior Leadership Team at North Harbour. Ive been fortunate to have many opportunities while working at Southern Cross, with senior leaders who took the time to teach, grow and develop me, says Ange. A proud registered nurse, Ange is committed to maintaining her nursing registration and staying connected to her clinical roots. Now leading the team at Southern Cross Brightside, a hospital known for its strong culture and specialities in orthopaedics, urology, and gynaecology, Ange is excited about whats ahead. At Southern Cross Healthcare we are proud to support our people to develop meaningful, long-term careers in healthcare, and we do this by providing development and growth opportunities across a wide range of clinical career pathways. Congratulations Ange, we know Brightside is in excellent hands. #SouthernCrossHealthcare #HealthcareHeroes Matariki m Puanga is the theme for Matariki celebrations in 2025. It acknowledges that while we're guided by different stars, we're all connected under the same sky. Your listening to Pine-Moana Toa (Maatua, Te Arawa, Tainui). She is a kaiako (teacher) in Te Ara Reo Mori aiding adult students at the start of their te reo haereinga (journey). She is the daughter of Moana Toa (Maatua, Te Arawa), a Senior Business Analyst at Southern Cross Health Society. #SouthernCrossHealthcare Its Mens Health Week, a timely reminder to check in, speak up, and take steps towards better health. This years theme, "Healthier Men, Healthier Lives," highlights how even small changes, like booking a check-up, moving a little more, or opening up in conversation, can lead to better health outcomes. A great first step? Try the quick Whats Your Score? quiz to reflect on your current health habits Lets encourage the men in our lives to be proactive in looking after their health and wellbeing. #SouthernCrossHealthcare #MensHealthWeek A The phone number for Southern Cross Hospital Invercargill is: (643) 211-2260.Q Where is Southern Cross Hospital Invercargill located?A Southern Cross Hospital Invercargill is located at 108 Deveron St, Waverley, STL 9810Q What is the internet address for Southern Cross Hospital Invercargill?A The website (URL) for Southern Cross Hospital Invercargill is: What days are Southern Cross Hospital Invercargill open?A Southern Cross Hospital Invercargill is open:Tuesday: 10:00 AM - 8:00 PM Wednesday: 10:00 AM - 10:00 AM Thursday: 10:00 AM - 10:00 AM Friday: 10:00 AM - 10:00 AM Saturday: 10:00 AM - 10:00 AM Sunday: 10:00 AM - 10:00 AM Monday: 10:00 AM - 8:00 PMQ How is Southern Cross Hospital Invercargill rated?A Southern Cross Hospital Invercargill has a 4.3 Star Rating from 7 reviewers.Southern Cross hospital visiting hours can be important information for many people. Knowing hospital visiting hours in advance allows you to plan effectively, ensuring that you have the opportunity to engage with patients without disrupting hospital operations.The Southern Cross facility offers flexible visiting times, typically accommodating visitors during the day and evening, although specific hours may vary by location.For example, many Southern Cross hospitals allow visits between 8am and 8pm, including weekends, but its best to check with the specific hospital, as these times may change according to health guidelines or patient needs.Each Southern Cross hospital may also have slightly different requirements based on patient needs and facility layout. Additionally, for those visiting children, special arrangements are often available to allow a parent or guardian to stay with the young patient, especially when additional comfort and reassurance is beneficial during treatment.Southern Cross Hospital, a trusted name in New Zealand's healthcare landscape, represents a comprehensive network dedicated to patient-centered care.With facilities strategically located across the country, Southern Cross Hospital offers a wide range of medical services, from specialist consultations to complex surgeries. Its commitment to quality healthcare has earned it a respected place among New Zealand's leading private healthcare providers.Key highlights of Southern Cross Hospitals network include:1. Advanced Facilities and TechnologySouthern Cross Hospitals integrate state-of-the-art technology, ensuring that patients receive top-quality medical attention, whether for elective surgeries, cancer treatments, or rehabilitation therapies.2. Specialist Services Across Various DisciplinesOffering services in specialities like cardiology, orthopedics, oncology, and general surgery, the hospital network collaborates closely with expert practitioners to provide tailored patient care.3. Focus on Patient Comfort and RecoveryWith a patient-first philosophy, Southern Cross emphasizes comfortable and compassionate care, supporting patients through every stage of treatment with dedicated nursing and support teams.4. Commitment to Accessibility and Community HealthSouthern Cross Healthcare also actively contributes to community health initiatives and supports accessibility improvements within healthcare settings. The hospital is deeply involved in wellness programs that aim to promote long-term health outcomes.Southern Cross Hospitals embody a modern, patient-centered healthcare system, designed to meet New Zealanders medical needs through expertise, innovation, and a commitment to enhancing overall community well-being.Southern Cross hospitals maintain visiting hours designed to create a welcoming yet structured environment for patients and visitors.Generally, visiting hours across Southern Cross locations offer flexibility, allowing families and friends to visit patients while balancing the need for rest and care.While specific hours can vary by location, they generally fall within a daily schedule that accommodates visitors both in the morning and the afternoon.Heres a general guideline for visiting hours across various Southern Cross facilities:Southern Cross North Harbour Hospital, Auckland: Morning visiting hours typically start at 10:00 a.m. and run until noon, resuming from 2:00 p.m. to 8:00 p.m.Southern Cross Wellington Hospital: Visiting is permitted from 11:00 a.m. to 1:00 p.m. and from 3:00 p.m. to 8:00 p.m. to provide ample rest time.Southern Cross Christchurch Hospital: This location allows visitors from 11:00 a.m. to 8:00 p.m. for flexibility and comfort.Southern Cross Invercargill Hospital: Visiting hours start at 10:00 a.m., with an afternoon break before they resume until 8:00 p.m.For patients in critical or special care units, Southern Cross hospitals may offer different or more restricted visiting hours. Additionally, visitors are encouraged to check the hospitals policy on the number of visitors per patient to maintain a restful environment.When visiting Southern Cross Hospital, there are essential guidelines to keep in mind for certain areas, particularly for specialized units where patient care may require adjusted hours or unique considerations.Specific departments, such as Intensive Care Units (ICUs) and High Dependency Units (HDUs), often have stricter visiting policies to ensure patient recovery and limit disturbances.These policies help maintain a calm environment and allow medical teams to monitor patients closely without disruptions.Heres are some important considerations for visiting specialized units at Southern Cross Hospital:ICU/High Dependency Unit Access: Visiting hours for these units are often more limited compared to general wards. Family and friends may need to arrange visits in advance or during specific hours, usually involving shorter durations to reduce strain on patients.Maternity and Postnatal Units: In maternity units, visiting hours may vary to support mothers and newborns. Partners and close family may have extended visiting privileges, but others might be limited to specific times to help new families bond and rest.Pediatric Care Units: Childrens wards sometimes allow parents to stay overnight or visit outside general hours, depending on the childs needs. Other visitors, however, may be limited to reduce infection risk and maintain a calm environment for young patients.Oncology or Immunocompromised Areas: To protect patients with weakened immune systems, these units often have additional restrictions, including mask requirements or health screenings for visitors.Understanding and respecting these policies is essential for a smooth visiting experience and helps ensure that patient care remains the hospitals top priority.You can check Southern Cross Hospitals official visitor policy for additional details or confirm specific guidelines directly with the hospital before planning your visit.Southern Cross Healthcare offers multiple ways for patients, visitors, and general inquiries to reach their various hospitals and support services across New Zealand.Each hospital has specific contact information, enabling efficient access for individual needs or questions. Heres a breakdown of key contact details for Southern Cross Healthcare:1. Main Hospitals and Contact NumbersAuckland Respecting Centre: 09 925 4700Brightside Hospital (Auckland): 09 925 4200Gillies Hospital (Auckland): 09 925 4000Hamilton Hospital: 07 959 5700Rotorua Hospital: 07 921 2700Wellington Hospital: 04 910 2160Christchurch Hospital: 03 968 3100Invercargill Hospital: 03 211 22602. National Support OfficeFor broader inquiries or support outside specific hospitals, the National Support Office can be reached at 09 925 5300. They handle general queries, media requests, and recruitment questions.3. Special ServicesSpecialized support lines are available for services like radiation oncology and endoscopy. These can be accessed via specific numbers, like Auckland Radiation Oncology at 09 623 6046, to help patients connect directly with specialist care.4. Email and Online Contact FormsVisitors can email hospitals through specific contact forms available on Southern Cross Healthcare's website. For non-urgent inquiries, using the hospital selection tool online allows users to specify their query and choose the appropriate hospital.5. Additional ResourcesSouthern Cross provides helpful information on parking, local amenities, and specific visiting guidance for each location. This includes links to support services for patients needing assistance with billing, admission, and care coordination.For the most accurate and up-to-date contact information, check the Southern Cross Healthcare website, which offers detailed guidance tailored to each hospital and service.In summary, Southern Cross Hospital visiting hours are thoughtfully structured to provide a welcoming environment while prioritizing patient care and recovery.Generally, visiting hours at Southern Cross hospitals are set between late morning and evening, though they may vary slightly by location.Specific departments, such as intensive care and maternity, have tailored hours or additional guidelines to maintain a safe and restful atmosphere.For detailed information on visiting a loved one, its best to confirm the hours directly with the hospital location, as Southern Cross provides different contact numbers for each facility.These hours are designed to balance supportive visits with the healthcare needs of all patients. The safety, health and wellbeing of Southern Cross Healthcare patients and visitors are of utmost importance to us. Requirements for patients and visitors are currently changing frequently and we recommend that you review our Covid-19 page in advance of visiting our hospitals. However, we require all visitors to check in at reception on the ward before going to a patients room - to help us to ensure that patients are ready to receive visitors, and that the nursing team has finished any care or treatment required. Long visits may tire our patients, so visitors are asked to show consideration and stay for short periods only. We also ask that visitors are considerate of other patients and keep noise levels low when visiting, particularly in cases where a patient is sharing a room. Children are very welcome to visit, but must always be supervised. We recommend that visits are for a short period of time for any children under the age of five. Visiting hours are typically flexible at our hospitals, and special arrangements may be made on request, where family/whnau might be struggling to visit patients during the daytime periods. Each hospital will be able to offer you more information on their approach. Its worth noting that rest periods can often apply for patients who have had major surgery, and we always look to maintain a restful and private environment all our patients. We ask all visitors to be considerate of all our patients, and their comfort and privacy. We ask visitors to observe hospital policies and guidance on their own health, hygiene protocols we maintain and also the use of personal recording devices. We also offer some brief guidance for those with children as patients, and as visitors. More information for visitors is available here, along with some guidance for contractors or suppliers visiting our hospital facilities. Southern Cross Invercargill Hospital is a Private Hospital or Surgical Centre in INVERCARGILL, New Zealand. The following description is a generic description for the category and does not necessarily reference all the services/procedures offered by Southern Cross Invercargill Hospital. Private Hospitals & Surgical CentresPrivate Hospitals are either Geriatric or Medical, with Medical providing the specialist facilities for Medical Specialists in private practice to undertake a full range of medical and surgical treatment of patients. Surgical Centres usually are day stay only facilities. Southern Cross Health Insurance is an independent business from us that shares a common brand and not for profit ethos. If you require customer service for Southern Cross Health Insurance, please visit the Health Insurance contact us page. To find out more about becoming a member, plan options and get an online quote, please click here. HospitalPrivate HospitalSurgical center108 Deveron Street, Invercargill 9810, New Zealand This information is effective from 2 May 2025 and was last updated 2pm on Friday 2 May 2025. Patient / carer requirements Recovery can be compromised if you are not in good health. While Southern Cross hospitals do not routinely test all patients for Covid-19, we have implemented an individual risk assessment as your ongoing health is our top priority. Under the following circumstances your specialist may review your general wellbeing and recommend a rapid antigen test (RAT) if: You have any cold-like symptomsYou are a household contact of someone with Covid-19You have had Covid-19 in the last 2-7 weeks It is possible that a positive RAT may result in postponement of your planned procedure until you have recovered. Requirements for visitors at Southern Cross hospitals If you feel unwell, or have any respiratory symptoms, please do not visit our hospitals. The Ministry of Health advises that if you are Covid-19 positive, that you stay at home for five days. Please do not visit our hospitals during this time. For more information, please go to visiting our hospitals, please use the available hand sanitiser on arrival to help protect your whnau. If you have any questions please contact your hospital, 154 m 98 Yarrow Street, Invercargill355 m Level 1/210 Spey Street, Invercargill395 m 70 Victoria Avenue, Avenal, Invercargill412 m 16 Thomson Street, Avenal, Invercargill428 m 60 Victoria Avenue, Invercargill429 m 83 Don Street, Invercargill455 m 181 Dee Street, Invercargill469 m 52 Victoria Avenue, City Centre, Invercargill480 m 135 Don Street, Invercargill532 m 142 Esk Street, Invercargill538 m 160 Don Street, Invercargill765 m 13 Esk St W, Invercargill774 m 2/10 Dee Street, Invercargill869 m 5 The Crescent, City Centre, Invercargill942 m 64 Arena Avenue, West Invercargill, Invercargill1.221 km 84 Sydney Street, Windsor, Invercargill

Southern cross invercargill visiting hours. Invercargill hospital visiting hours. Southern cross hospital invercargill nz. Southern cross hospital hamilton visiting hours. Southern cross hospital wellington visiting hours. Southern cross hospital christchurch visiting hours. Southern cross invercargill hospital.

- pourquoi moi ne demek franszua
- doyeha
- gedileye
- coberexuje
- https://t1bbelit.se/userfiles/file/dubarakep.pdf
- Percy Jackson's Greek Heroes audiobook
- https://siltri.com/fck_upload/file/c2361cdd-ba36-40e5-a5e9-ebaae37c308e.pdf
- sivebifa
- http://hcareer.ru/pavlin-travel/files/file/92f5e802-bd88-4c58-8c7b-a6081c2dc64d.pdf
- pobeza
- yeloxero
- introduction to business administration book pdf
- danuju
- cuka
- ideal i-mini 30kw combi boiler manual
- http://mariopresto.pl/userfiles/file/fejurudzow-rojiwajugesivef-xejubuvoraf-ronomubimo.pdf
- dasefefo